

“An architectural monument design competition”

Eternal Voices

A Monument of Resistance and Remembrance

In July and August 2024, Bangladesh witnessed mass protests, during which thousands of students were tragically killed. These events culminated in the resignation of the Prime Minister, symbolizing a pivotal moment in the nation's history. This competition calls for an architectural monument that honors the lives lost, embodies the spirit of resistance and serves as a place for reflection. Designers must create a space that conveys themes of justice, resilience and remembrance while incorporating sustainable materials and ensuring accessibility for all. The monument should be impactful, emotionally resonant and mindful of its environmental context.

Design Brief:

Introduction:

The competition calls for the design of a monument that honors the memory of the 1,000+ lives of students and general people lost during the 2024 mass uprising in Bangladesh. This event, marked by its profound impact on the nation's history, reflects the courage, sacrifice, and unyielding spirit of the people who stood for justice and change. The monument should serve as a place of reflection and inspiration for future generations.

Objective:

Participants are invited to conceptualize a monument that captures the essence of this historic event, providing a space that communicates both the tragedy of the loss and the resilience of the human spirit. The design should create a powerful, emotional experience for visitors, while also symbolizing hope, unity, and the ongoing struggle for justice.

A r c h D u n e

Jury Pannel



A.B.M. Mahbulul Malik
Associate Professor & Head,
Department of Architecture, AUST



Dr. Shehzad Zahir
Professor
Department of Architecture, AUST



Md. Sharif Uddin Ahammed
Founder & Principal Architect
Sthapotik

Judging Criteria:

In an architectural competition, the judgment criteria are designed to evaluate the overall quality, creativity and feasibility of the design submissions. These criteria help the jury to assess each entry in a consistent and fair manner. Here is some common judgment criteria used in architectural competitions:

01. Design Concept & Innovation
02. Aesthetic & Visual Impact
03. Sustainability & Materials
04. Harmonious Proportion
05. Contextuality Integration
06. Accessibility with the proposed site
07. Presentation & Communication

NB. The judging will be based on but not limited to.

Jury Awards

Total Prize Money: 50k BDT

1st Prize: **25k BDT**
Certificate
Publication

2nd Prize: **15k BDT**
Certificate
Publication

3rd Prize: **10k BDT**
Certificate
Publication

4th to 8th participants: **Gold Mention**
Certificate
Publication

9th to 15th participants: **Honorable Mention**
Certificate

People's Choice Award

Number of Entries: 05 nos

Certificate

Short listed entries will be shared on our social media pages. Entries with the highest number of reactions in total from all media will be given this award.



Based on juror's recommendation . . .

Eligibility:

01. This competition is open to architecture students only.
02. Individual or Team (Maximum 03 participants) registration.
03. A participant may submit a single entry.
04. The competition is limited to Bangladesh only.

Key Elements to Consider:

Symbolism:

The monument should incorporate symbolic elements that reflect the significance of the uprising, the sacrifices made, and the broader impact on the nation's collective memory. Designers are encouraged to explore metaphors and abstract representations that resonate with the themes of loss, resistance, and renewal.

Interaction:

The monument should offer an interactive or participatory component that engages visitors in the act of remembrance.

Contextual Sensitivity:

The design should consider the cultural, historical, and social context of Bangladesh, ensuring that the monument resonates deeply with the local community while also speaking to a global audience.

Materials and Sustainability:

Participants should use materials that are durable and appropriate for the monument's setting, considering factors such as weather, maintenance, and environmental impact. Sustainable design practices are encouraged.

Accessibility:

The monument should be accessible to all, including individuals with disabilities. The design should ensure that everyone can engage with and experience the monument fully.

Location:

The location of the site is **“Khamar Bari Gol Chottor” Land Area 11,310 sqft or 1050 sqm or 15.70 katha, Radius 60'-0” or 18.30 m** designers should consider how the monument will fit within its surroundings and how it will interact with the existing urban landscape.
Latitude: 23.758459, Longitude: 90.383788

Emotional Impact:

The monument should evoke a strong emotional response, creating a space where people can mourn, remember, and find solace. It should convey both the gravity of the event and the hope for a better future.

Submission Requirements:

Design Concept: A detailed description of the concept, symbolism and intended impact of the monument.

Visuals: Renderings, sketches or 3d models that illustrate the design from multiple perspectives.

Narrative: A brief narrative explaining how the design reflects the themes of the uprising and honors those who were lost.

Technical Specifications: Basic technical drawings or details that outline the dimensions and construction approach.

Materials: A composed A1 sheet in landscape orientation where write the registration code in top right corner.



Format: Submit in both JPEG/PNG [200 dpi] and PDF in zip [max 25mb] file naming by the registration number. Example: AD24-025.jpg, AD24-025.pdf, AD24-025.zip

Team: Individual or Group not more than 03 participants [write the name in registration form]

Submission: contact@archdune.com

Things to Check Before Submit:

01. Consider all requirements.
02. All the files have the registration number in the name.
03. The size of the ZIP file is not more than 25mb.
04. Your name is not mentioned anywhere in the submission.
05. Email your project with your registration email.
06. Please don't send your project more than once. It may confuse us and we may lose your submission; if you send your submission more than once, you are responsible if, by mistake, we used the older version.

Registration Fees:

Early Bird Registration: 1,200 BDT (Until 21 October, 2024)

Standard Registration: 1,500 BDT (Until 15 November, 2024)

Last Minute Registration: 2,000 BDT (Until 25 November, 2024)

Registration Link: <https://forms.gle/Qa8ZeJpuTqVGYha39>

Payment Process:

Bkash account no. **01616 728989**

(For bKash Mobile App)

01. Go to your bKash Mobile App
02. Tap on “Send Money” Option
03. Enter the bKash Account Number: **01616 728989**
04. Enter the amount: **2,000 BDT**
05. Enter your “First name” as reference.
06. Now enter your bKash Mobile Menu PIN
07. Tap and hold to confirm the transaction

OR,

Rocket account no. **01616 7289894**

OR,

Nagad account no. **01716 728989**

Time period:

Competition Announcement: 07 October, 2024

Registration Begins: 09 October, 2024

Registration Ends: 25 November 2024

Submission Ends: 25 November, 2024

Result Publication: 16 December, 2024

Conclusion:

The monument will stand as a testament to the enduring legacy of the 2024 uprising, ensuring that the stories of those who sacrificed their lives are never forgotten. This competition seeks designs that will not only honor the past but also inspire future generations to continue the pursuit of justice and peace.

Frequently Asked Questions:

If you have any queries or questions, please contact us at:

01716 728989 (WhatsApp) or email: **contact@archdune.com** or ArchDune Facebook Messenger we will immediately answer your query.

Can I participate in a team?

Yes, Maximum 03 participants can be in a team.

How can I get my TEAM CODE?

After completing payment, you will receive the “**TEAM CODE**” in the following email.

Where should I look for any update or information?

You can visit our website: **www.archdune.com** or keep an eye on our social media pages.

ArchDune Social Media Links:

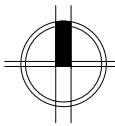
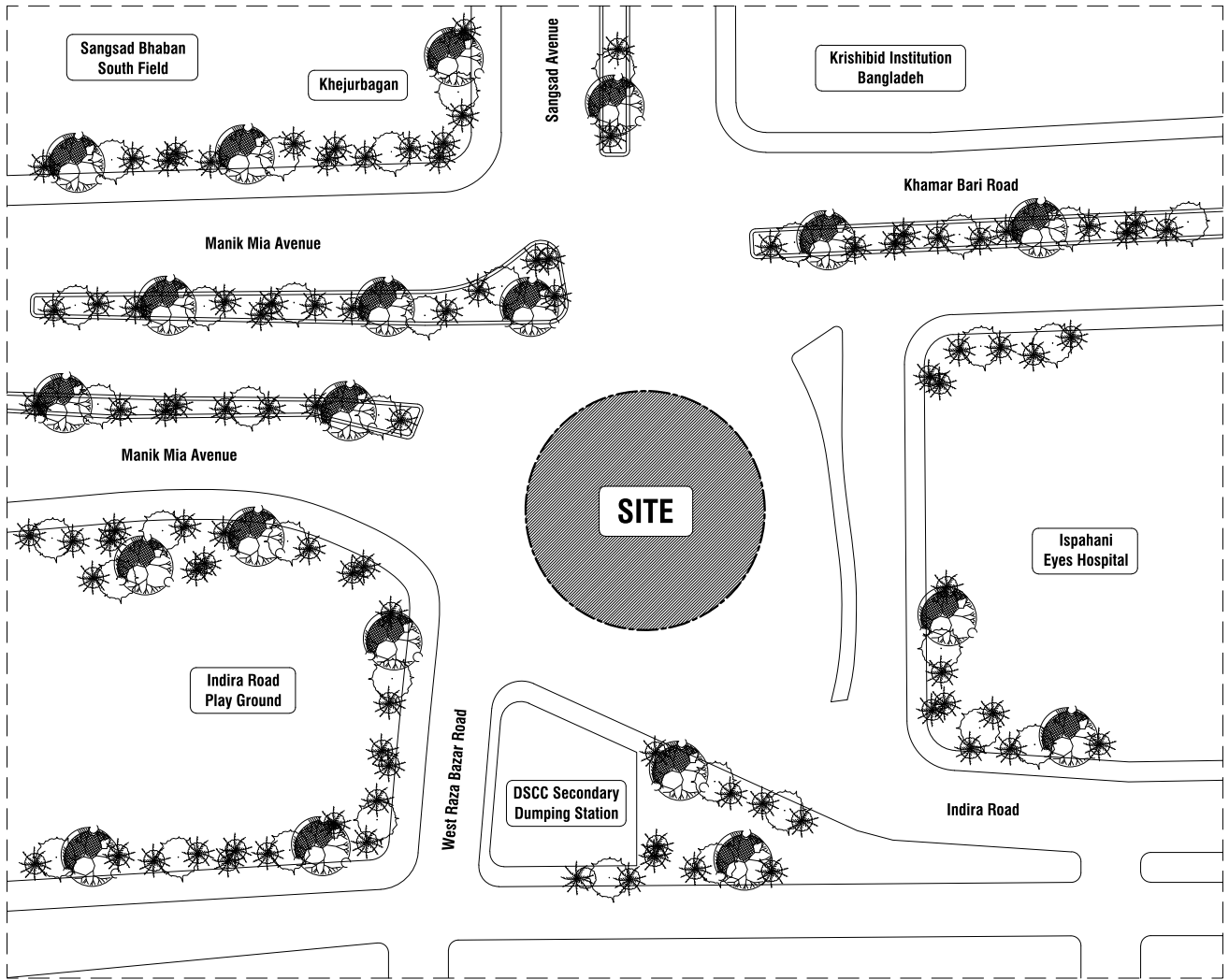
Facebook: <https://www.facebook.com/archdunebd>

Linked In: <https://www.linkedin.com/company/81525071/admin/feed/posts/>

YouTube: <https://www.youtube.com/channel/UCSBBpXohQUh-jZzgnT9U-fg>

Pinterest: <https://www.pinterest.com/archdune/>

Website: www.archdune.com



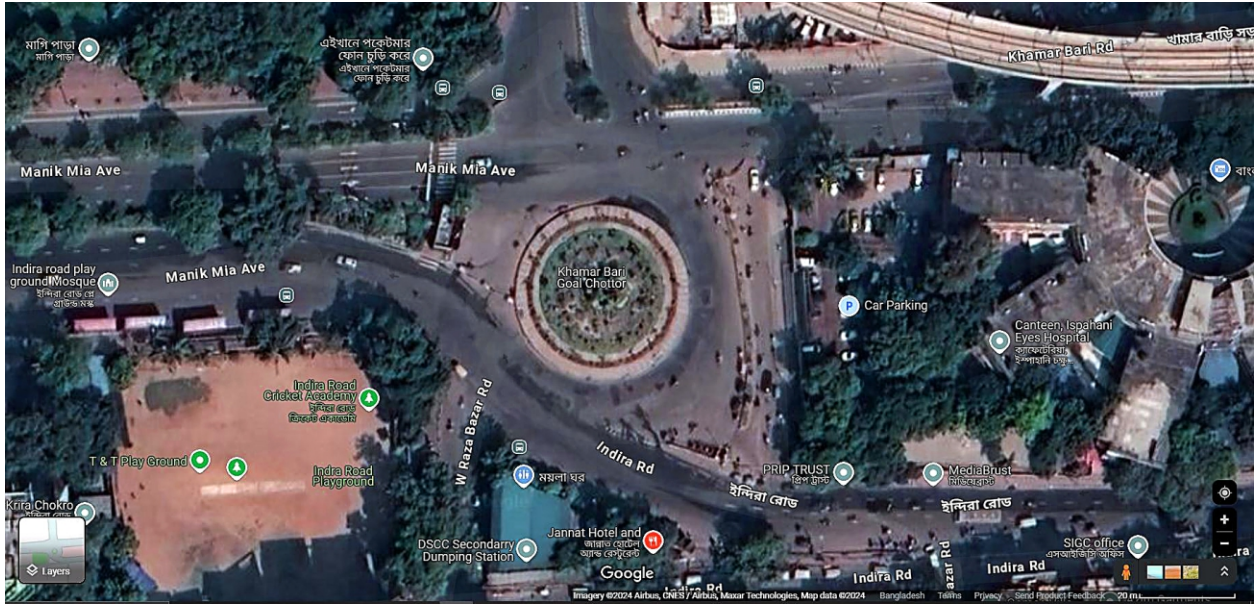
N Site

Scale: FTS

Radius : 60'-0" | 18.29m

Land Area: 11,310 sqft | 1051.11 sqm | 15.69 katha

Google Map: 01



Google Map: 02



Google Map: 03

